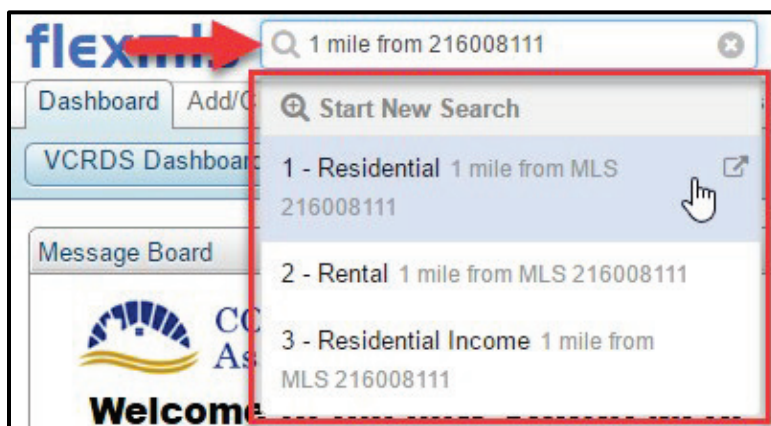


Radius Searching in Flexmls

Flexmls offer several different ways to perform a Radius Search. You can begin a radius search from the MLS # search screen, from an MLS # search in the Quick Launch bar, by manually drawing a radius on a Quick/Map Search, by clicking a listing on the Quick/Map Search, or by locating an address on the map on the Quick/Map Search. Once you've begun a radius search, you can edit and modify your search criteria at any point in time.

Quick Launch

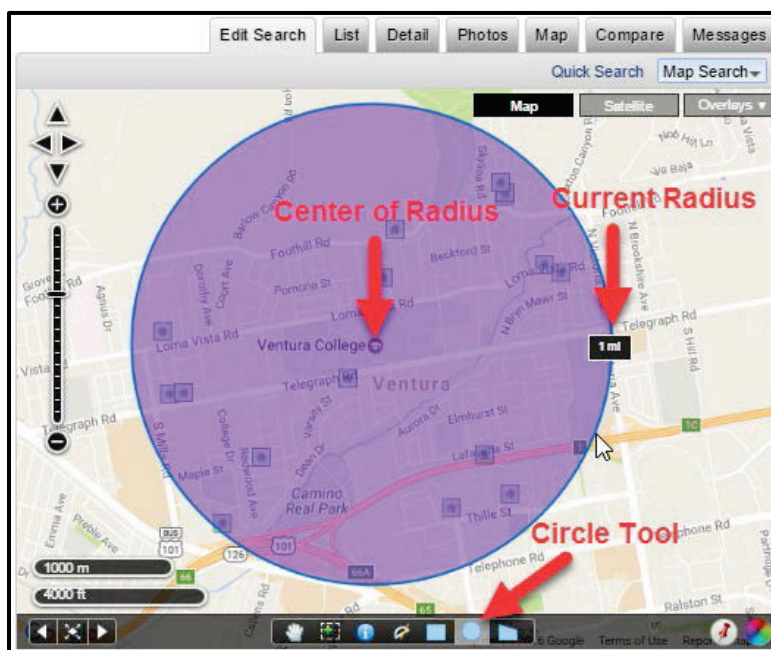
From any screen in Flexmls, type in "near" or "close to" plus an MLS # to begin a search with a radius of 2 miles from the listing. Type in "X miles from" an MLS # to start a radius search. Select the appropriate Quick Search template to run the radius search. Please note, when using the Quick Launch to draw a radius, the radius you specify must be a whole number; decimals will not work. The search results will include Active Listings by default and the Property Type is determined by which Quick Search template you selected.



Manually Drawn Radius

To access the Map Search, go to the Search Menu and select **Map Search** or from a Quick Search, select the **Map Search** option on the Edit Search tab. Select the Circle tool at the bottom of the map. Click the map to place the center of your radius, then move your mouse to draw the radius. The right edge of the circle indicates your current radius. Click your mouse again to finish drawing the radius and add it to your search.

You can select the status(es) and any other search criteria from the Quick Search template on the left of the screen.



MLS # Search

Go to the Search menu and select **MLS #**. Under Other Options, check the Radius Search box, set the radius, select the statuses to include, and select the MLSs to search (all MLSs are selected by default). You can include decimal points in the search radius. Please note, the results will include all property types. If you included off market listings in your search, you can go to the edit search tab to select specific off market dates.

Search for Multiple MLS Numbers

Enter MLS numbers you wish to retrieve separated by commas.

21451462

Example: 2151,5936
Range: 125..135 searches between 125 and 135, inclusive.

Other Options

Radius Searching

Find listings within mile(s) with status Active

For each MLS number, radius searching will find all listings within the specified number of miles that have the selected status.

Radius searching does not apply to MLS number ranges such as 125..135.

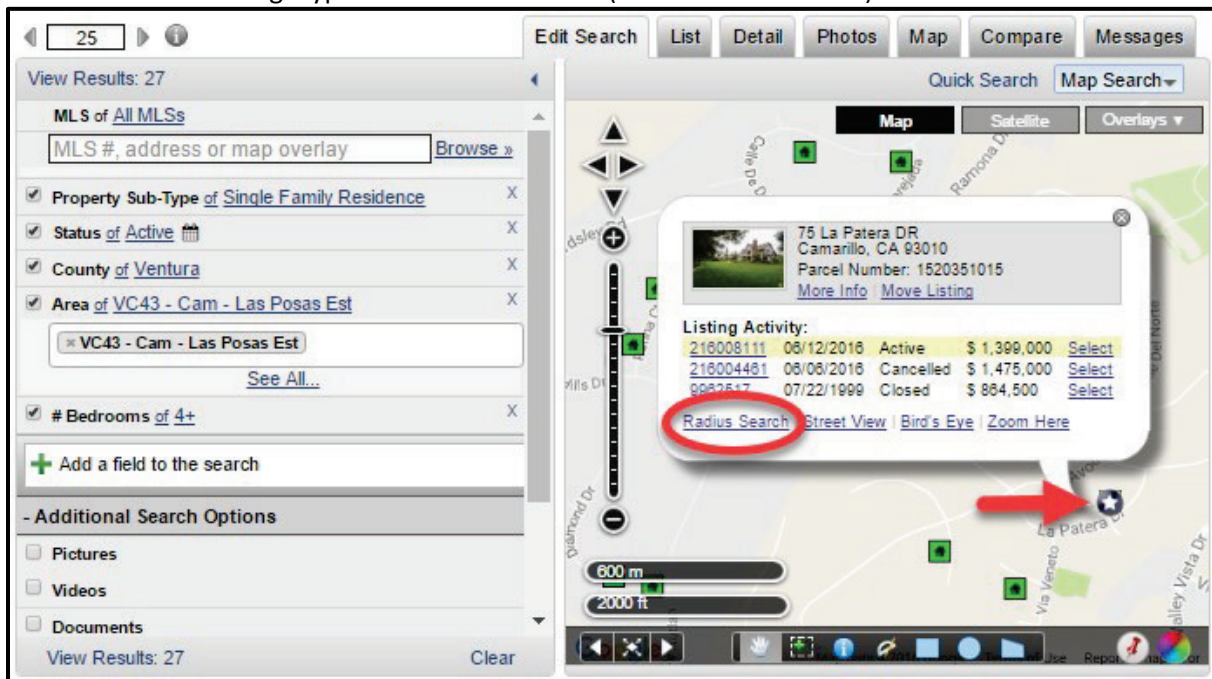
Pending
Closed
Expired
Withdrawn
Cancelled

Next >>



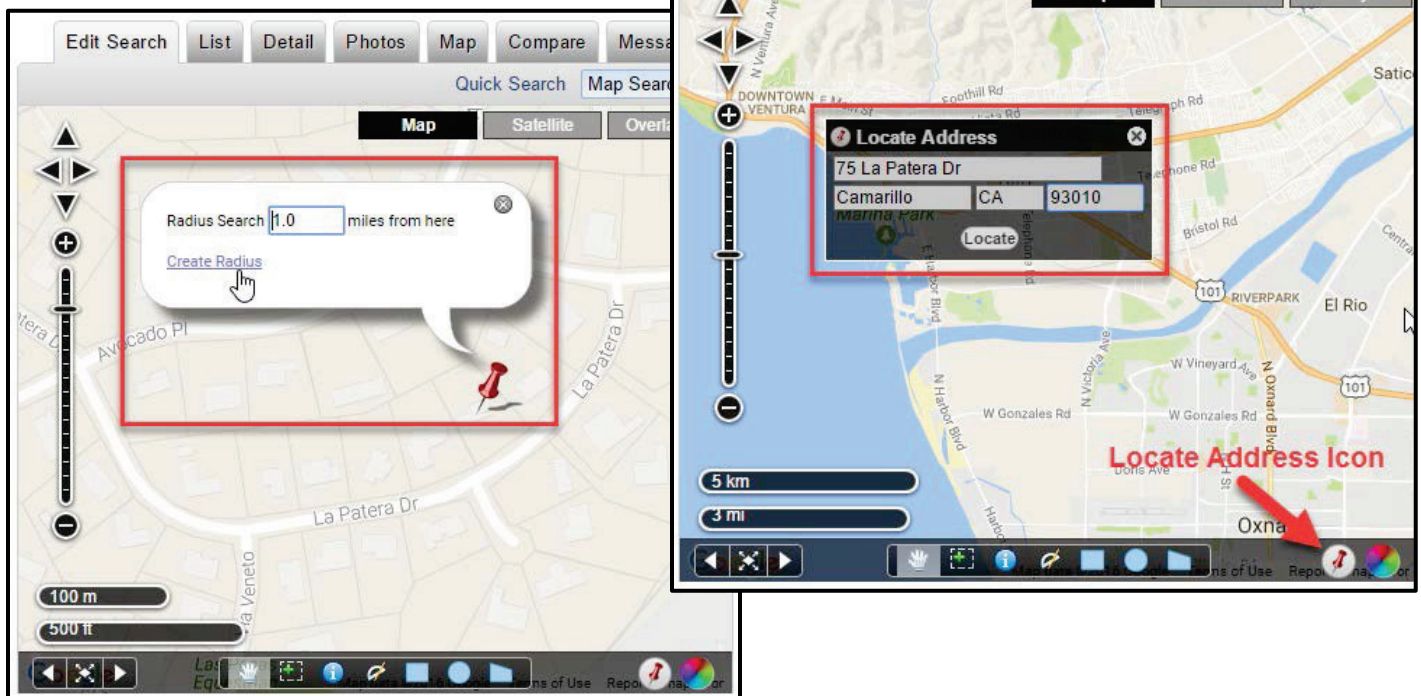
From a Selected Listing

When using the Map Search, you can enter search criteria on the left side of the screen. As you narrow down your search results, matching listings will show on the map. Click a listing to select it, then click **Radius Search** to draw a radius around the selected listing. Type in the desired radius (decimals are allowed) and click **Create Radius**.



Locate Address

Locate a specific address on the map by clicking the Locate Address icon, type in the address information, then click **Locate**.



A pushpin will appear at the address's location. If necessary, you can drop and drag the pushpin into position. Click **Use this location** to set the pushpin on the map, then click **Radius Search**. Enter the desired radius (decimals are allowed) and click **Create Radius**.

