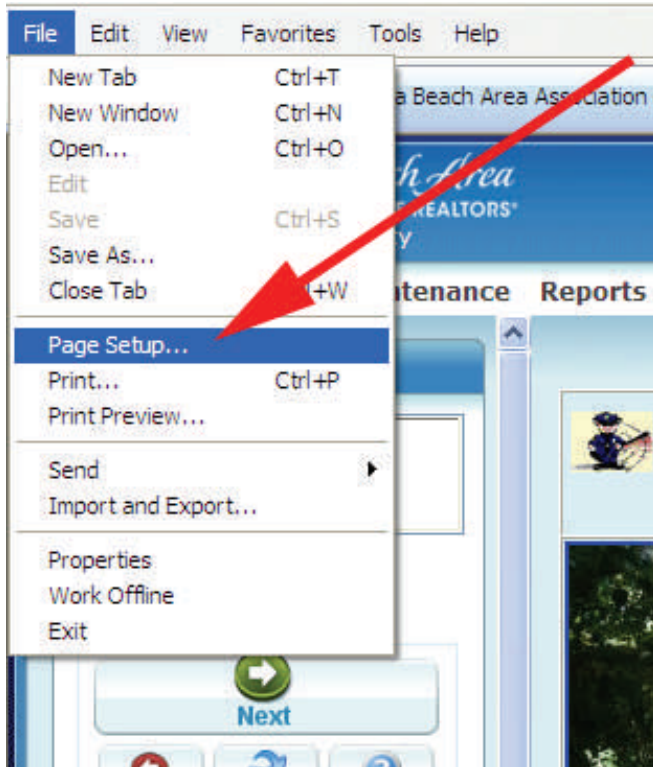


Setting Up Page Margins to Print in InnoVia

On certain displays, in InnoVia, the default settings in Internet Explorer can cause some printers to print a second page with only a line or two of extraneous information. This is a waste of paper and ink, and is more time-consuming when printing several listings.

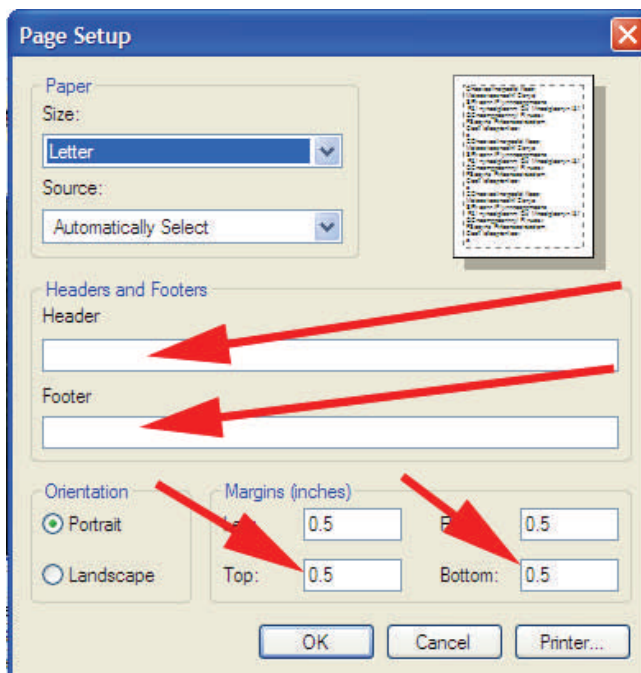
Here is how to correct this.



1) With Internet Explorer open, move your cursor to File, and click on Page Setup.

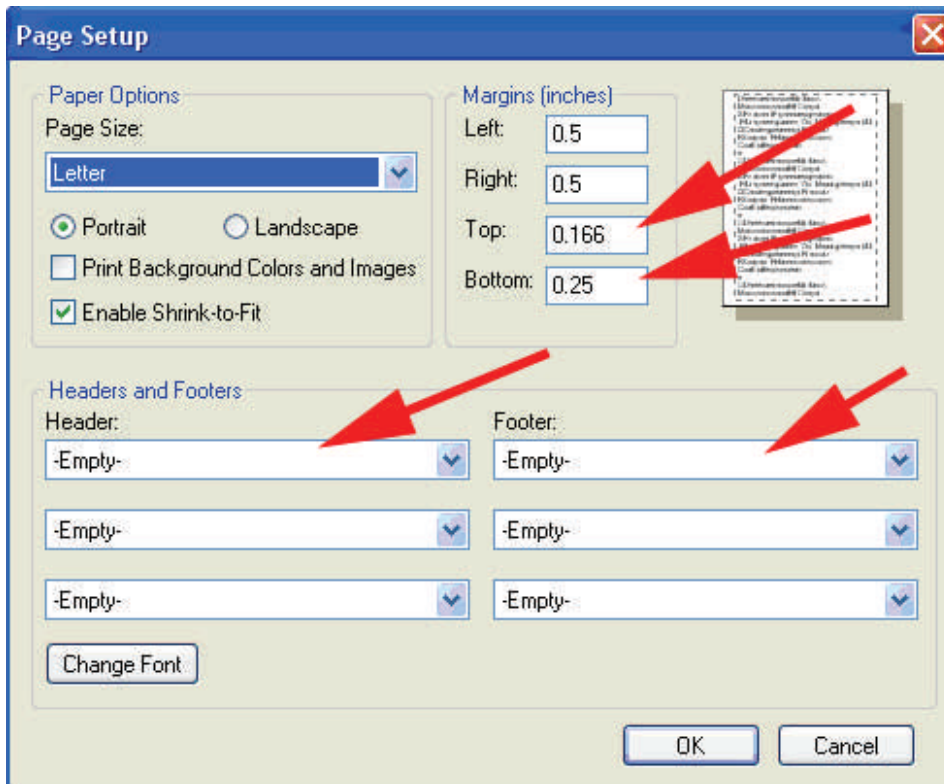
This will bring you to a dialog box as in the example below.

Instructions for Internet Explorer 7



2) In the Page Setup dialog box, delete the stuff in the header and footer fields, and set your margins at the top and bottom to .5 inches. This should solve the vast majority of problems with most printers. If you are still having a problem, try setting the top and bottom margins to .25 inches.

Instructions for Internet Explorer 8



2) In the Page Setup dialog box, make sure the header and footer fields are set to empty, and set your margins at the top and bottom to .5 inches. This should solve the vast majority of problems with most printers. If you are still having a problem, try setting the top and bottom margins to .25 inches or the minimum your printer will allow.

You can also check the “Enable Shrink-to-Fit” checkbox to make sure the displays print without the extra pages.